



SIGHT GLASS

MODEL T8N/T10N

Features

Compact lightweight sight glass for installation at the outlet side of steam traps to monitor trap performance and to check for steam leakage. Also recommended for checking the line flow of air and water. Suitable for small-to-large flow rates.

1. Clear sighting through self-polishing, heat-resistant glass.
2. Ball movement indicates the flow status.
3. Model T(F)10N is designed for large flow rates due to through-hole in the partition between inlet and outlet.
4. Compact design saves space.
5. Inline repairable.



Specifications

Model	T8N/T10N	TF8N/TF10N
Connection	Screwed	Flanged
Size (mm)	15, 20, 25, 32, 40, 50	
Maximum Operating Pressure (MPaG)	PMO	1.57
Maximum Operating Temperature (°C)	TMO	200

PRESSURE SHELL DESIGN CONDITIONS (**NOT** OPERATING CONDITIONS):

Maximum Allowable Pressure (MPaG) PMA: 1.57

Maximum Allowable Temperature (°C) TMA: 200

1 MPa = 10.197 kg/cm²



To avoid abnormal operation, accidents or serious injury, DO NOT use this product outside of the specification range. Local regulations may restrict the use of this product to below the conditions quoted.

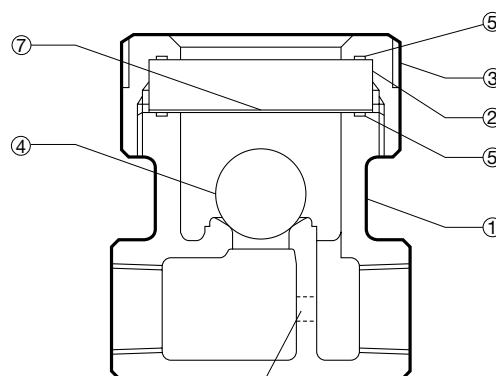
No.	Description	Material	JIS	ASTM/AISI*
①	Body	Cast Iron	FC250	A126 Cl. B
② ^R	Sight Glass	Heat Resistant Glass	—	—
③	Glass Holder	Cast Iron	FC250	A126 Cl. B
④ ^R	Ball	Fluorine Resin	PTFE	PTFE
⑤ ^{MR}	Gasket	Fluorine Resin	PTFE	PTFE
⑥	Nameplate**	Stainless Steel	SUS304	AISI304
⑦ ^{MR}	Guard Plate	Mica	—	—

* Equivalent ** Shown overleaf

Replacement kits available: (M) maintenance parts, (R) repair parts



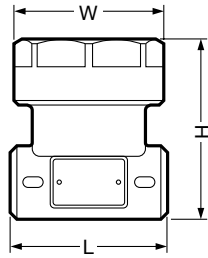
The heat-resistant glass must be replaced every year



Through-hole
(T(F)10N only)

Dimensions

● T8N/T10N
Screwed

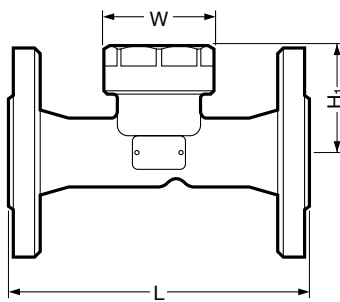


T8N/T10N Screwed* (mm)

Size	L	H	φW	Through-hole dia.**	Weight (kg)
15	68	79	64	10	0.9
20	75	87		15	1.0
25	79	94		18	1.2
32	120	106		20	1.9
40		113		25	2.1
50	126	127		30	2.7

* Rc(PT), other standards available ** T10N only

● TF8N/TF10N
Flanged



TF8N/TF10N Flanged* (mm)

Size	L (ASME Class)		H ₁	W	Through-hole Diameter**	Weight (kg)
	150RF	300RF				
15	175	175	64	64	10	2.5 (2.9)
20	180	180	61		15	3.4 (4.6)
25		184	64		18	3.8 (5.0)
32	200	200	69		20	4.8 (5.8)
40		71	25		5.6 (8.3)	
50		204	76		30	7.6 (10)

* Fits to ASME Class 150RF or 300RF, other standards available, but length and weight may vary

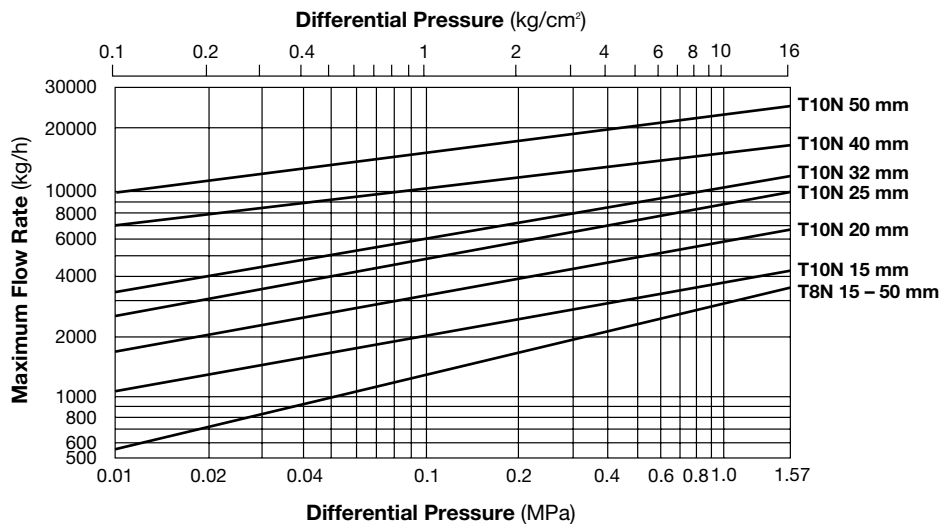
** TF10N only

() ASME Class 300RF



Install a check valve on the outlet side if there is the danger of downstream water hammer!

Capacities



1. Differential pressure is the difference between the inlet and outlet pressure of the sight glass.
2. Capacities are based on continuous discharge of condensate 6 °C below saturated steam temperature.

Manufacturer

TLV® CO., LTD.
Kakogawa, Japan

is approved by LRQA Ltd. to ISO 9001/14001

ISO 9001/ISO 14001

